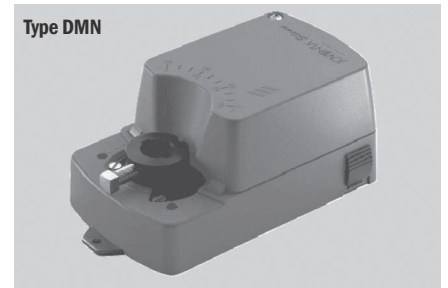
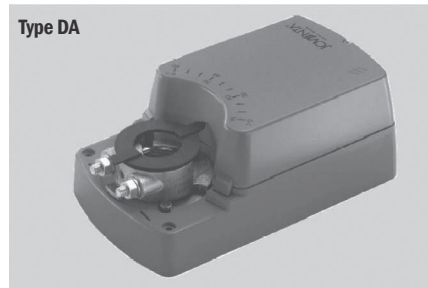
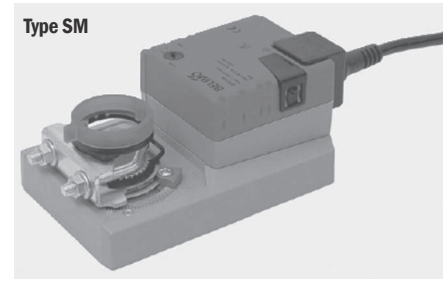
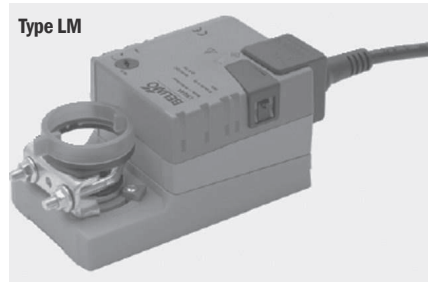


■ Motor actuators

In the variants of products with motor actuators, the motor actuators of the BELIMO or JOVENTA producer are used. Upon the request of the buyer, products can also be adapted to motor actuators of other producers.

It can be chosen from

- motors of various powers
- connection voltage of 24 V or 220 V
- ON/OFF regulation or continuous regulation (SR)



Code Hidria Catalogue	Engine BELIMO, JOVENTA	POWER in Nm	Motor is appropriate for the following products:
B1 J1	LM 24A DAN 1.N	4	Diffusers: OD-11V, KD-8 Shutt-off dampers ZL-1; Throttling dampers DL in DL-1
B2 J2	LM 230A DAN 2.N	4	Diffusers: OD-11V, KD-8 Shutt-off dampers ZL-1; Throttling dampers DL in DL-1
B3 J3	LM 24A SR DMN 1.2	4	Diffusers: OD-11V, KD-8 Shutt-off dampers ZL-1; Throttling dampers DL in DL-1
B4 J4	NM 24A DAS 1	8	Nozzles; diffusers in the case when larger power is required; OD-11V size 630
B5 J5	NM 230A DAS 2	8	Nozzles; diffusers in the case when larger power is required; OD-11V size 630
B6 J6	NM 24A SR DMS 1.1	8	Nozzles; diffusers in the case when larger power is required; OD-11V size 630
B7 J7	SM 24A DA 1	15	OD-11V size 800
B8 J8	SM 230A DA 2	15	OD-11V size 800
B9 J9	SM 24A SR DM 1.1	15	OD-11V size 800
B10 J10	SM 230A SR DM 2.2	15	OD-11V size 800

VENTILATING GRILLES,
VENTILATING VALVES

CIRCULAR DIFFUSERS,
SQUARE DIFFUSERS

**SWIRL DIFFUSERS,
VARIABLE SWIRL
DIFFUSERS**

SLOT DIFFUSERS,
ROUND DUCT DIFFUSERS

AIR DISPLACEMENT
UNITS

SUPPLY AIR NOZZLES

EXTERNAL ELEMENTS

AIR FLOW
CONTROL UNITS

SOUND ATTENUATORS,
SOUND ATTENUATING
LOUVRES